



# CROWNVIEW

by LINDSAY WINDOWS



# SENSIBLE

# VALUE

[www.LindsayWindows.com](http://www.LindsayWindows.com)



# QUALITY

MEETS VALUE, ENERGY SAVINGS AND SECURITY.



If you are looking for a vinyl window that offers top-of-the-line style and quality at a price that suits a budget, CrownView Windows are the perfect choice to enhance the appearance of your home while keeping you comfortable. CrownView Windows provide the durability and energy savings you need while offering you the best overall value for years to come.



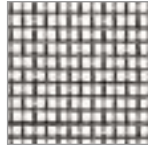
At Lindsay Windows, we are committed to being environmentally engaged and responsible. Throughout the vinyl window manufacturing process—as well as how we go about our daily business—we are continually working to protect you and the environment. Our vinyl windows do not require the elimination of trees, harmful paints or stains and have an environmentally-friendly, extended life cycle which means lower consumption and less waste. Their high performance reduces the energy used in homes and their components are recyclable. At our corporate and manufacturing facilities, Lindsay Windows promotes a culture that embraces energy-saving technologies, recycling and environmental awareness as a part of everyone's responsibility of helping to preserve our world. Our commitment to reducing waste and improving recycling earned us a Waste Wise Leader Award.



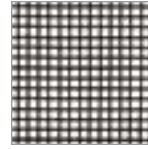
# SCREENS

## CHOOSE FROM THESE SCREENS

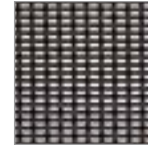
CrownView Windows are standard with a fiberglass half screen. Full screens are available as an upgrade on double hung and slider windows. Upgrade your screen mesh to Clear View Screen Mesh, Pet Screen or Charcoal Aluminum.



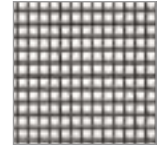
STANDARD FIBERGLASS



CLEAR VIEW FIBERGLASS



PET SCREEN



CHARCOAL ALUMINUM

### Clear View Screen Advantages:

- ▶ Allows more light through than the standard screen mesh
- ▶ Uses a finer gauge of fiberglass strand than the standard screen mesh
- ▶ Clear View Screen Mesh has more strands providing a tighter weave that keeps the bugs out
- ▶ Optional for all windows that use a screen

## OR TRY THIS OPTIONAL REVOLUTIONARY SCREEN FROM FLEXSCREEN

### FlexScreen Advantages:

- ▶ Simple design uses a PVC coated, high-performance spring steel frame
- ▶ FlexScreen is damage resistant. No more bent aluminum frames, scratched paint and broken hardware
- ▶ Effortless installation
- ▶ FlexScreen's frame is not visible. It hides in the window screen pocket, improving sight lines and eliminating the need for color matching
- ▶ Lifetime warranty directly from FlexScreen
- ▶ Available in Standard and Clear View Mesh.
- ▶ Optional for all windows



### 25 YEAR LIMITED WARRANTY

Lindsay Windows has a leading industry warranty that will provide you with peace of mind. The basic window unit has a 25 year warranty that covers everything including hardware, framing and glass from any defect under normal use. The glass package has a 25 year warranty against seal failure and a one year warranty on stress cracks. See warranty information for details and specific limitations.

# PERFORMANCE

## ENTECH INSULATING GLASS

EnTech insulating glass units deliver the ideal energy balance of solar heat control, high visibility and fade protection. With gas filled chambers and Low-E coatings, our windows provide high levels of year-round comfort and energy savings. Plus, they reduce your environmental impact by reducing energy consumption.

### EnTech (Standard)

EnTech is a dual-glazed, soft coat unit with two layers of silver coating on its Low-E glass and an argon gas chamber.

### EnTech Pro (Optional)

EnTech Pro is a dual-glazed, soft coat unit and features three layers of silver coating on its Low-E glass and an argon gas chamber.

### EnTech Peak (Optional)

EnTech Peak is a top-of-the-line insulating glass unit. This triple-glazed unit incorporates two lites of silver-coated Low-E glass with an interior glass lite and two argon gas chambers. *Also available with krypton for even greater energy performance.*

### Go Plus (EnTech+, EnTech Pro+ and EnTech Peak+)

Add the plus feature to any of the above glass packages to obtain additional Low-E coating on the interior. The interior piece of glass is a hard coat Low-E. This option improves the EnTech or EnTech Pro u-value between .03 and .05.

## WARM EDGE TECHNOLOGY

CrownView's technology incorporates a warm edge product that reduces condensation, frosting and mold growth while providing superior energy performance. The spacer technology and insulated glass processes have been tested to meet the rigid ASTM 2190 certification. This certification tests for durability, longevity and argon retention.

## MORE PERFORMANCE FEATURES



### Mold Resistant Weatherstrip

The average CrownView double hung window has over 25 feet of fin seal weatherstrip. It helps reduce outside noise and infiltration of exterior air and other elements.

## SECURE HARDWARE



Lock

CrownView's SecureEZ Hardware combines streamlined lock visuals with a slimline tilt latch, to achieve a cleaner high-end appearance and true market distinction. It also allows the sash to easily tilt in for cleaning. The locks on CrownView windows have been tested to be 25% stronger than a comparable zinc lock.



Tilt Latch



### Interlock

The non-metallic reinforced interlock on the CrownView double hung window is designed to significantly reduce air infiltration. It also helps as a security barrier for your home. The reinforcement provides strength for long-term satisfaction of your windows.



### Innergy™ Reinforcement

This advanced fiber glass resin insert provides superior strength and thermal performance. Innergy™ non-metal reinforcement provides up to 700 times the thermal performance over metal reinforcements.

# DISTINCTIVE DESIGN

CrownView Windows are engineered to combine style, economy, maximum visibility and design flexibility with energy performance and security. The CrownView Window is an economical choice in the window market that doesn't sacrifice energy performance or quality.

## FEATURES THAT MAKE A DIFFERENCE

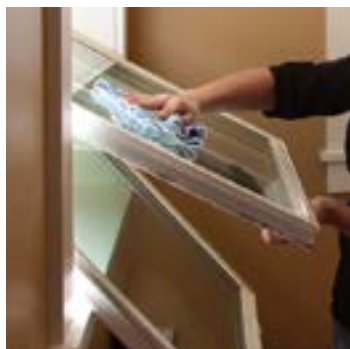
- ▶ Comfort through energy efficient glass and window design
- ▶ Reduced outside noise from multiple frame chambers, weatherstrip, insulated glass and warm edge spacer
- ▶ Strength and durability from fusion welded frame and sash
- ▶ Easy clean sashes that tilt-in on double hung windows (bottom only on single hung windows)
- ▶ Great water run-off and quick cleaning with sloped sill
- ▶ Smooth operation from OpenEZ high-quality balances
- ▶ UV ray reduction and improved energy efficiency from Low-E glass (Use of Low-E glass can help protect your home furnishings from fading)
- ▶ Condensation reduction from warm edge spacer
- ▶ Peace of mind with warranty backed from a window company in business since 1947
- ▶ Optional glass packages provide additional energy saving benefits
- ▶ Optional sash vents limit travel of top and bottom sash
- ▶ Extruded Nail Fin, Brick Mould, and 3.5" Trim options
- ▶ Built in J Channel, Jamb Extensions, and Casing available

## ATTRACTIVE

- ▶ Beveled sash provides great look and sleek feel
- ▶ Smooth, maintenance-free interior and exterior surfaces
- ▶ Rounded tilt-latches for contoured look
- ▶ Contoured locks provide smooth look and tight fit
- ▶ Mitered screen corners with no exposed corner pieces
- ▶ Extruded, curved lift rails look great instead of a flat bulky look
- ▶ Optional screen mesh and FlexScreen
- ▶ Optional (WOCD) Window Operating Control Device



Double Hung Window



Tilts in for Easy Cleaning



Optional Sash Vents



Spring-Loaded Code Compliant WOCD Option



Non-Metal Interlock Reinforcement

# WINDOW STYLES

CrownView Windows are available in many styles to suit your home and budget.

**CROWNVIEW WINDOW OFFERINGS INCLUDE:**

Double Hung and Single Hung Windows | Casement and Awning Windows | Picture Windows | Double Slider | Single Slider | 3-Lite Slider  
Bay Windows | Bow Windows | Patio Doors - 2, 3 and 4 Lite | Geometric and Specialty Windows | Basement Hopper Windows  
Revolution Tilt-n-Turn Windows | Garden Windows



**DOUBLE AND SINGLE HUNG WINDOWS**



**BAY AND BOW WINDOWS**



**CASEMENT & AWNING WINDOWS**



**GEOMETRICAL SHAPES**



**SLIDER WINDOWS (3-Lite 1/4, 1/2, 1/4 shown)**



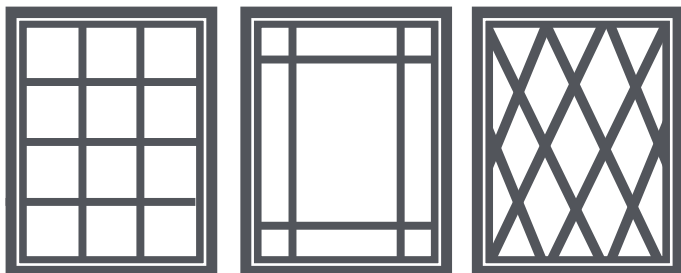
**PATIO DOORS**

# DESIGN & COLOR OPTIONS

## GRID PATTERNS AND TYPES

Enhance the look of your home with distinctive grid styles. All grids are between the glass—making cleaning easy. Simply choose a grid pattern and type below to accent your new windows or design your own grid pattern.

### GRID PATTERNS



COLONIAL

PRAIRIE

DIAMOND

The number of grids used in the colonial (standard) and diamond patterns vary depending on window size.

### GRID TYPES



FLAT



SCULPTURED



V-GROOVE



SIMULATED DIVIDED LITE  
(outside of glass in and out)

## OBSCURE GLASS

Obscure glass is commonly used in bathrooms to distort the image behind the glass. Choose from these options.



NORMAL VIEW

STANDARD  
OBSCURE

AQUA

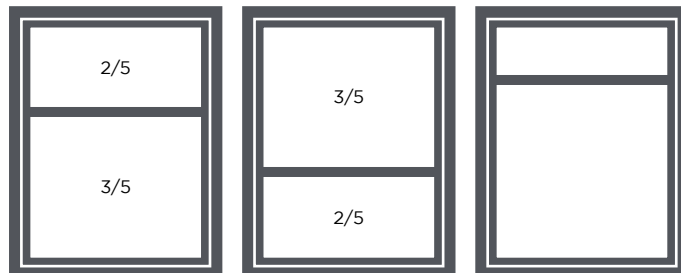
RAIN

### TEMPERED GLASS

Often required in bathrooms, stairways and windows close to the floor or a doorway, tempered glass is similar to a car windshield so it will not shatter if broken. Check your local building code for any windows requiring tempered glass.

## DOUBLE HUNG AND SINGLE HUNG MEETING RAIL OPTIONS

You have the option to change the height of your single hung or double hung meeting rail. A custom meeting rail is available by measuring from the bottom sill of the window to the top of the meeting rail.



COTTAGE

ORIEL

CUSTOM

## COLOR CHOICES

Several color choices are available. Choose from solid vinyl colors or optional color coatings and woodgrain interiors.

### EXTERIOR/INTERIOR COLORS



WHITE

CLAY

SANDSTONE

### WOODGRAIN INTERIOR



LIGHT OAK

DARK OAK

CHERRY

GOLDEN  
MAPLE

WALNUT

Jamb and casing available in panel colors as windows including wood grains. Woodgrain laminates are available only on white base for 3100 and 3300

### EXTERIOR/INTERIOR LAMINATES



BRONZE  
LAMINATE

BLACK  
LAMINATE

SILVER  
LAMINATE

### EXTERIOR/INTERIOR COATINGS



CREAM  
WHITE

PARCHMENT  
BUTTERCREAM

LINDSAY  
SANDSTONE

CLAY

TERRATONE

LINDSAY  
EARTHSTONE



LINDSAY  
GREEN

BRICK  
RED

ROYAL  
BROWN

MOUNTAIN  
RIDGE

LINDSAY  
BRONZE

STORM  
GRAY

MIDNIGHT  
BLACK

Actual colors may vary from those shown. Many color samples are available upon request.



Contact your local dealer or  
Lindsay Windows  
for more information.

North Mankato, Minnesota  
(507) 625-4278

Union, Missouri  
(636) 583-0850

North Aurora, Illinois  
(630) 892-5091

Other Manufacturing Facilities  
Georgia, Washington, California

[www.LindsayWindows.com](http://www.LindsayWindows.com)  
[info@LindsayWindows.com](mailto:info@LindsayWindows.com)

Thank you for considering  
CrownView Windows.



Lindsay Dealer:

## PROVEN QUALITY



### ENERGY STAR® APPROVED

CrownView Windows are designed to reduce energy consumption and meet the rigorous standards set by ENERGY STAR. CrownView Windows have options that can even meet the more difficult standards. Since 1947 we have worked hard to design and manufacture energy efficient windows for your home.



### EARTHWISE™

Lindsay Windows is the largest member and a founding member of the Earthwise™ Group in 2003. This group of manufacturers work collaboratively to help lower costs and share ideas related to purchasing, operations, marketing, customer satisfaction and window testing. Through this membership CrownView Windows carry the Good Housekeeping and Made In USA Certified seals.



### MADE IN USA CERTIFIED

CrownView Windows are not only manufactured and assembled in the USA, but incorporate a significant percentage of materials from suppliers in the United States. While Made in USA certification calls for 75% of the value of the window to be made and produced in the United States, our goal is to exceed 95%. Primary materials produced in the United States are window extrusions, glass, weatherstrip, screen mesh, reinforcement and glass spacer. We have switched our screen mesh supplier because they moved their manufacturing facility outside of the United States. We take pride in the quality materials we purchase to build windows for your home.



### GOOD HOUSEKEEPING SEAL OF APPROVAL

CrownView Windows proudly carry the Good Housekeeping seal of approval. Among the most recognized brands in America, Good Housekeeping and the Good Housekeeping Institute have evaluated Earthwise™ Windows to meet the criteria for the Good Housekeeping Seal. CrownView Windows have carried the seal since 2006.

