



HEALTHY  
— WINDOW —

by LINDSAY WINDOWS



your lifetime.

HEALTHY ENDURANCE.



# Timeless windows to last a lifetime.



**HEALTHY**  
— WINDOW —

by LINDSAY WINDOWS

Each and every home is as unique as the people who inhabit it. All homeowners desire to be comfortable, healthy and safe. When it comes to choosing windows for your home, you want the most attractive, strong and energy-efficient window available to build value in your investment. Healthy Windows incorporates the best in vinyl window manufacturing with high performing glass to enhance each home's unique style and function. Their endurance is built on over 65 years of tried and true craftsmanship backed with a lifetime limited warranty.

# Proven Quality



## ENERGY STAR® APPROVED

ENERGY STAR criteria is changing on January 1, 2015 (2016 for Northern Region). While the standards for ENERGY STAR 2015 are rigorous, we designed the Healthy Window to meet these difficult standards. Healthy Windows exceed the current ENERGY STAR standards and meet or exceed the standards the next set of criteria. Healthy Windows are designed to reduce energy consumption, prolong the life of your furnace and air conditioner, help the environment and provide additional comfort for you in your home.



## EARTHWISE™

Lindsay Windows was a founding member of the Earthwise™ Group in 2003. This group of manufacturers work collaboratively to help lower costs and share ideas related to purchasing, operations, marketing, customer satisfaction and window testing. Through this membership Healthy Windows carry the Good Housekeeping and Made In USA Certified seals.



## MADE IN USA CERTIFIED

Healthy Windows are not only manufactured and assembled in the USA, but incorporate a significant percentage of materials from suppliers in the United States. While Made in USA certification calls for 75% of the value of the window to be made and produced in the United States, our goal is to exceed 95%. Primary materials produced in the United States are window extrusions, glass, weatherstrip, screen mesh, reinforcement and glass spacer. In 2012, we switched our screen mesh supplier because they moved their manufacturing facility outside of the United States. We take pride in the quality materials we purchase to build windows for your home.



## GOOD HOUSEKEEPING SEAL OF APPROVAL

Healthy Windows proudly carry the Good Housekeeping seal of approval. Among the most recognized brands in America, Good Housekeeping and the Good Housekeeping Institute have evaluated Earthwise™ Windows to meet the criteria for the Good Housekeeping Seal. Healthy Windows have carried the seal since 2006.

## LIFETIME LIMITED WARRANTY

Since 1947, the manufacturer of Healthy Windows has offered industry-leading warranties for their products. Today, Healthy Windows have a lifetime limited warranty that is non-prorated and transferable. The warranty covers everything on the window for as long as you own your home. See warranty information for details and specific limitations.

At Lindsay Windows, we are committed to being environmentally engaged and responsible. Throughout the vinyl window manufacturing process—as well as how we go about our daily business—we are continually working to protect you and the environment. Our vinyl windows do not require the elimination of trees, harmful paints or stains and have an environmentally-friendly, extended life cycle which means lower consumption and less waste. Their high performance reduces the energy used in homes and their components are recyclable. At our corporate and manufacturing facilities, Lindsay Windows promotes a culture that embraces energy-saving technologies, recycling and environmental awareness as a part of everyone's responsibility of helping to preserve our world. Our commitment to reducing waste and improving recycling earned us the Minnesota Waste Wise Leader Award.



# Performance

## ELEMENTS INSULATING GLASS

Elements insulating glass units deliver the ideal energy balance of solar heat control, high visibility and fade protection. With gas filled chambers and Low-E coatings, our windows provide high levels of year-round comfort and energy savings. Plus, they reduce your environmental impact by reducing energy consumption.

Glass Package	Pieces of Glass	Silver Layers	Gas Filler	Neat® Glass*	Current ENERGY STAR	2015 ENERGY STAR
<b>Elements2</b> Elements2 is a dual-glazed, soft coat Low-E glass unit.	2	2	Argon	No	Exceeds	Requires Plus Option
<b>Elements3</b> Elements3 is a dual-glazed, soft coat Low-E glass unit.	2	3	Argon	Yes	Exceeds	Meets
<b>Elements5</b> Elements5 is a top-of-the-line insulating glass unit. This triple-glazed unit incorporates two lites of silver-coated Low-E glass with an interior glass lite and two argon gas chambers.	3	5	Argon (standard) Krypton (optional)	Yes	Exceeds	Exceeds

### Go Plus (Elements2+, Elements3+ and Elements5+)

Add the plus feature to any of the above glass packages to obtain additional Low-E coating on the interior. The interior piece of glass is a hard coat Low-E. This option improves the Elements2 or Elements3 u-value between .03 and .05.

\*Neat® is an invisible, durable and permanent coating that helps your windows stay clean longer. It uses the sun's UV rays to loosen dirt so water can rinse it away.

## FOAM SPACER TECHNOLOGY

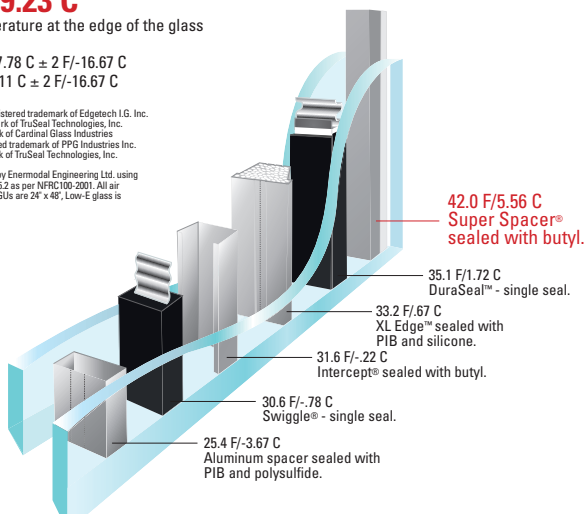
Healthy's foam spacer technology incorporates a non-metal edge seal product that reduces condensation, frosting and mold growth while providing high levels of energy performance. Additional benefits include superior argon or krypton retentions and durability under extreme conditions.

up to  
**+16.6 F/9.23 C**  
 warmer temperature at the edge of the glass

Outside 0 F/-17.78 C ± 2 F/-16.67 C  
 Inside 70 F/21.11 C ± 2 F/-16.67 C

Super Spacer® is a registered trademark of Edgetech I.G. Inc.  
 DuraSeal™ is a trademark of TruSeal Technologies, Inc.  
 XL Edge™ is a trademark of Cardinal Glass Industries  
 Intercept® is a registered trademark of PPG Industries Inc.  
 Swiggle® is a trademark of TruSeal Technologies, Inc.

Simulations performed by Enermodal Engineering Ltd. using Window 5.2 and Therm 5.2 as per NFRC100-2001. All air spaces are .500" wide, IGUs are 24" x 48". Low-E glass is Cardinal Low-E2 172.



## MORE PERFORMANCE FEATURES



### Mold Resistant Weatherstrip

The average Healthy double hung window has over 45 feet of mold resistant weatherstrip. This specially formulated weatherstrip resists and kills allergy-aggravating, microparticles of pollen, fungi, mold, mildew and bacteria. It also helps reduce outside noise and infiltration of exterior gases such as carbon monoxide.



### Innergy™ Reinforcement

Innergy™ Thermal Reinforcements are advanced non-metallic composite fiberglass reinforced resin inserts, specially designed to fit into window chambers for greater support and insulation.



### TruSecure Hardware

Healthy Window's TruSecure Hardware system includes an attractive lock and a rounded cove nose tilt latch. The top and bottom sash tilt in using this distinctive hardware and provide added security for your home.

# Superior Design

Engineered to combine style, beauty and design flexibility with superior performance and security, the Healthy Window is the benchmark for the high-end, premium window market.

## CONSCIOUS DESIGN FEATURES

- uPVC vinyl compound for easy maintenance and consistent color. No more rotting, painting or staining
- Made in USA Innergy™ reinforcement reduces the energy loss between the exterior and interior without sacrificing strength
- TruSecure Hardware for added security
- Lift rail overlaps sill for improved pressure ratings and security
- Three pieces of weatherstrip reduces outside air and sound
- Double strength glass for add strength and longevity
- Overlapping interlock improves safety and air resistance
- Welded frame and sash corners for outstanding strength
- Sloped sill for great water runoff and seal
- Optional sash vent allows limited sash opening

## ATTRACTIVE DESIGN

- Curved and beveled exterior provide attractive curb appeal
- Smooth interlock for attractive view from the inside
- Balance tube covers hide distracting chambers
- Matching color hardware with options to customize it for your home

## EASY TO USE

- Top and bottom sash tilt in for easy cleaning
- Smooth operation with EasyTru Balance System for opening and closing your window



Non-metal Interlock



Optional Sash Vent

Double Hung Window

# Window Styles



## Double Hung

Healthy double hung windows are exceedingly beautiful—the most common choice for homeowners. Double hung windows contain two sashes which both open for venting and cleaning.

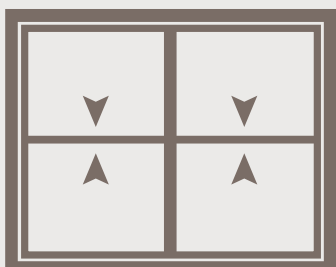
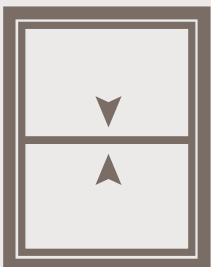
These windows will not only enhance the look of your home, but provide excellent protection from the outside elements.

Healthy double hung windows feature:

- Top and bottom sash tilt in for easy cleaning
- Extruded mitered screen frames
- Three weatherstrip layers to reduce air and sound infiltration
- Several standard interior and exterior colors with optional coating of any color
- Optional foam filled frame and sash to improve energy performance and sound reduction



Tilt-in window for easy cleaning from inside.





# Slider

Healthy slider windows have a clean and simple design that adds style to your home. They provide years of worry-free operation, excellent ventilation and durable vinyl that stands the test of time. Both sashes can be removed for cleaning. On the slide-n-swing, the sashes swing in for easy cleaning.

Healthy slider windows feature:

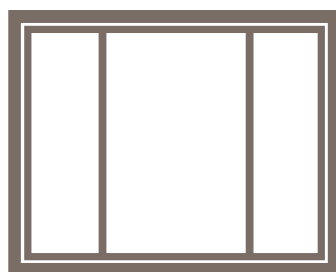
- Durable brass adjustable rollers
- Three pieces of weatherstrip to minimize air infiltration
- Superior visibility for a better view
- Most economical window for enhancing a larger opening
- Engineered weepage system to enable water drainage and minimize air infiltration
- Configurations include 2-lite, 1/3-1/3-1/3 and 1/4-1/2-1/4



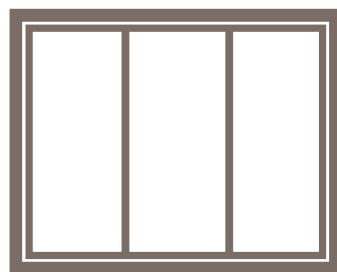
Slide-n-swing window for easy cleaning from inside. Both sashes are able to swing in.



2-Lite Slider



1/4-1/2-1/4 Configuration



1/3-1/3-1/3 Configuration



Slide-n-Swing  
(swings inside)

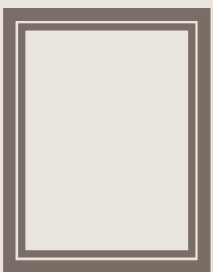


## Picture

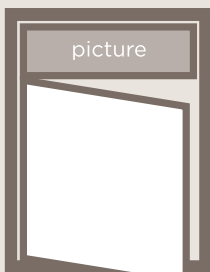
Healthy picture windows provide a calm, peaceful environment that keeps outside noise out and inside noise in. These windows have a clean look and allow for maximum light and view to the outdoors.

Healthy picture windows feature:

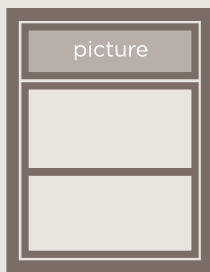
- Superior visibility to the outside
- Non-operable and very energy efficient
- Clean aesthetics for rich look
- Ideal for attaching to side, top or bottom of operable windows
- Several colors and woodgrains available



Picture



Casement with Transom



Double Hung with Transom

## Sliding Patio

Open the door to exhilaration. Enjoy the best of both worlds: a room with a view that opens to the outdoors and gives you the peace of mind of a weather-tight Healthy sliding patio door. Optional between-the-glass blinds that tilt and raise are also available.

Healthy sliding patio doors feature:

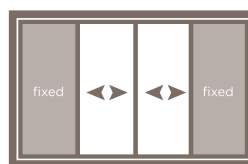
- Heavy-duty adjustable brass rollers for easy operation
- Removable sashes to allow for moving of large objects in and out of home
- Opening of sash can be changed to reverse operating direction without removing frame
- Optional between-the-glass blinds
- Optional foot and/or key lock for added security
- Optional pet screen mesh
- Optional top-mount screen for improved operation
- Optional 2-point lock



2-Lite Patio Door



3-Lite Center Operator



4-Lite Patio Door





# Casement & Awning

The best casement windows give maximum glass visibility and provide savings and strength with minimal effort using strong, reliable hardware. Healthy casement windows are built with superior hardware that functions smoothly. Healthy casement windows do not have the “flat” casement look, but are contoured to appear like hung and slider windows.

Healthy casement windows offer:

- Excellent energy savings
- Easy cleaning from the inside with 90 degree opening
- Three pieces of weatherstrip between the frame and sash
- Multi-point locking for increased security
- Choice of eight hardware color options
- Several interior and exterior color options are available
- Optional between-the-glass blinds are either in a removable glass panel or a sealed IG unit
- Optional interior woodgrains available
- Optional center bar makes casement look like a double hung (see picture below)



Picture Window over Awning Window



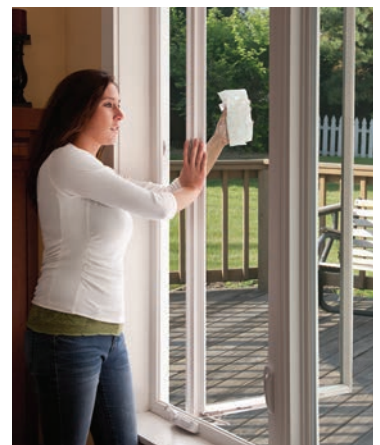
Casement window with optional center bar gives the look of a double hung.



Extruded screen frame with small tabs to hold the screen securely in place.



Optional between-the-glass blinds or blind panel inserts.



Casements are easy to clean from inside your home.



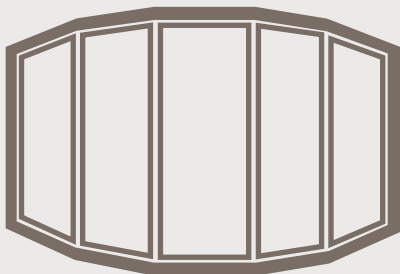
## Bay and Bow

Add space, light and a uniquely elegant look to your home with a custom bay or bow window. Healthy bay and bow windows dramatically change the appearance and feel of almost any room in a way that is certain to increase the value and splendor of your home. Bay and bows open up your room for more light and visibility to enjoy the outside from inside.

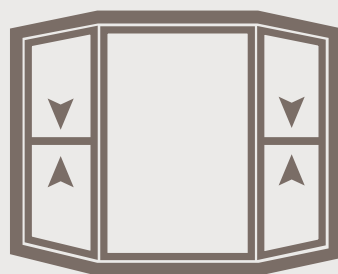
Healthy bay and bow windows feature:

- Custom sizes with various options for projection and seat board
- A combination of operable and non-operable windows
- Added value and curb appeal to your home
- Narrow frame and sash to maximize glass view
- One unit construction for strength and energy efficiency
- Seat board options include: oak, birch and laminate
- Optional colors and woodgrains

*Choose which windows you would like to operate. Most customers choose to have the end windows (flankers) operate and the rest fixed.*



Five Wide Bow Window



Bay Window with Double Hung



Bay Window with Casement Flankers



Four Wide Bow with Casement Flankers



## GEOMETRIC WINDOWS

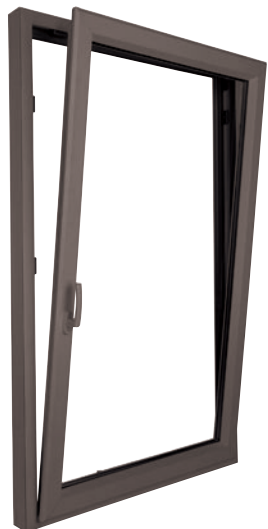
Make your home unique with geometric windows. Many special shapes and window configurations are available, including:

- Circle
- Arch Top
- Octagon
- Ellipse
- Half Round
- Trapezoid
- Quarter Round
- Custom Shapes

# Geometric & Specialty

## REVOLUTION TILT-N-TURN WINDOWS

- European designed window with a North American screen built into the frame
- The top of the sash tilts in for secure, indirect ventilation. No rain and no unwanted nature, thanks to the integral screen feature
- The entire sash opens inward for a classic European look and feel. With full access to both sides of the glass, cleaning is a breeze, and offers easy egress in emergencies
- The sash locks with a single movement of the handle



Tilt-n-Turn Tilts In



Tilt-n-Turn Swings In



Multi-Point Locking System

## BASEMENT WINDOWS



Basement Window from Inside (closed)



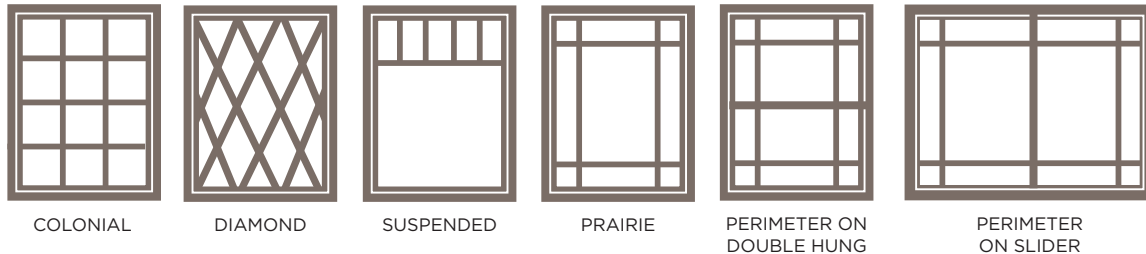
Basement Window from Inside (open)

# Design & Color Options

## GRID PATTERNS AND TYPES

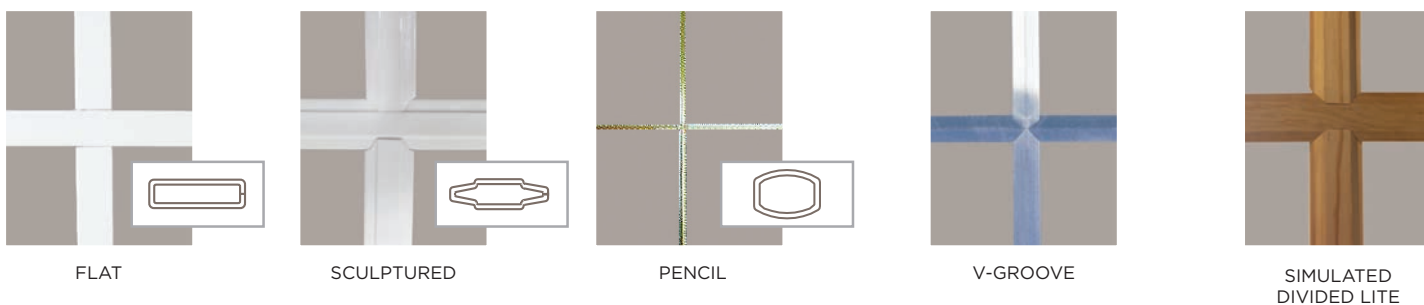
Enhance the look of your home with distinctive grid styles. All grids are between the glass—making cleaning a breeze. Simply choose a grid pattern and type below to accent your new windows and make them your own.

### GRID PATTERNS



The number of grids used in the colonial (standard) and diamond patterns vary depending on window size. All the above are available as simulated divided lites.

### GRID TYPES



## COLOR CHOICES

Several color choices are available. Choose from solid vinyl colors or optional color coatings and woodgrain interiors.

### INTERIOR COLORS

#### Solid



WHITE SANDSTONE CLAY

#### Woodgrains



LIGHT OAK DARK OAK CHERRY

### EXTERIOR COLORS

#### Solid



WHITE SANDSTONE CLAY

#### Coatings



EARTHTONE EVERGREEN BRONZE CUSTOM\*

Actual colors may vary from those shown.

\*Additional standard colors are available as well as custom color matching. Stainable/paintable pine available on casement and picture windows.

## HARDWARE COLOR

Customize your window look by choosing from a wide selection of hardware colors.



Actual colors may vary from those shown.

### Casement and Awning:

Brass, Antique Brass, Satin Nickel, Tuscan Bronze, Clay, Sandstone and White

### Double Hung:

Brass, Antique Brass, Satin Nickel, Tuscan Bronze, Clay, Sandstone and White

### Patio Handles:

Antique Brass, Antique Silver, Brushed Chrome, Brass, Tuscan Bronze, Satin Nickel, Clay, Sandstone and White

## OBSCURE GLASS

Obscure glass is commonly used in bathrooms to distort the image behind the glass.



NORMAL VIEW STANDARD OBSCURE AQUA RAIN

# Exterior Options

## BRICK MOULD AND TRIM

Enhance the exterior of your home by choosing one of our exterior trim options.



TWO PART BRICK MOULD



TWO PART BRICK MOULD WITH SILL NOSE

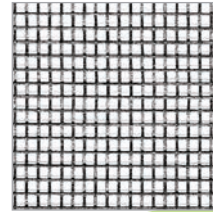


3-1/2" EXTERIOR TRIM

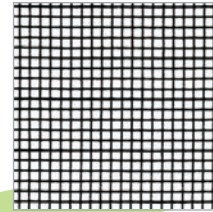
## SCREEN OPTIONS

### Clear View Screen Advantages:

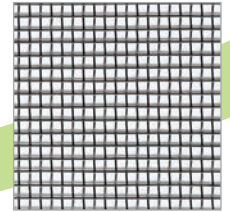
- Allows more light through than the standard screen mesh
- Uses a finer gauge of fiberglass strand than the standard screen mesh
- Clear View Screen Mesh has more strands providing a tighter weave that keeps the bugs out
- Optional for all windows that use a screen



STANDARD FIBERGLASS



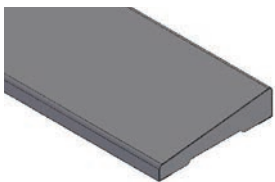
CLEAR VIEW FIBERGLASS



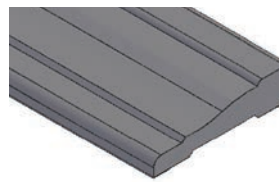
CHARCOAL ALUMINUM

# Interior Options

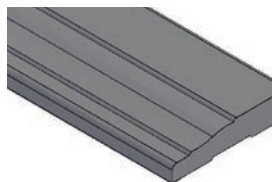
## EXTENSION JAMB AND WINDOW CASING



2-1/4" RANCH STYLE



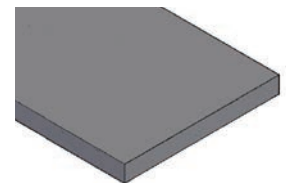
2-1/4" COLONIAL STYLE



3-1/4" COLONIAL STYLE



1/2" x 3/4" BASE SHOE TRIM



EXTENSION JAMB

### EXTENSION JAMB AND WINDOW CASING COLORS



WHITE



LIGHT OAK



DARK OAK



CHERRY



OAK VENEER



PINE VENEER\*

Actual colors may vary.  
\*Pine Veneer only available for extension jamb.



# HEALTHY WINDOW

Contact your local dealer or Lindsay Windows for more information.

North Mankato, Minnesota  
(507) 625-4278

Union, Missouri  
(636) 583-0850

Warrenville, Illinois  
(630) 791-9079

[www.LindsayWindows.com](http://www.LindsayWindows.com)  
[info@LindsayWindows.com](mailto:info@LindsayWindows.com)

Thank you for considering Healthy Windows.

## A TRADITION OF QUALITY SINCE 1947

Lindsay Windows began over 65 years ago as a privately held, family-owned company, which it still is today. Our mission has always been to manufacture the highest quality products using materials with advanced manufacturing equipment and procedures.

Our products carry extensive industry certifications and are distributed through a network of qualified dealers. All of our products exceed the current standards for ENERGY STAR compliance and have some of the best ratings in the industry.

Our modern production facilities in Minnesota, Missouri and Illinois manufacture vinyl products for the Midwestern United States window and door markets. We value our employees and consider every employee a salesperson for our company. It is a privilege to provide you with the finest products that are the best value on the market, with the best energy performance and warranty. Our best testimonies come from our thousands of satisfied customers. We want you to be one of them.

Our prices reflect our commitment to craftsmanship, advanced materials and superior performance.

Thank You,

John, Geoff and the whole Lindsay Team

Authorized Dealer

